



**Charlie**

UND DER  
WUNDERGARTEN

FRONT BUILDING

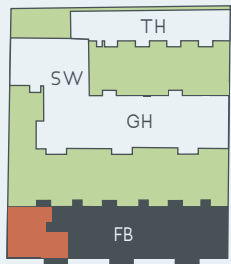
# VH A5.1

5<sup>th</sup> FLOOR PENTHOUSE

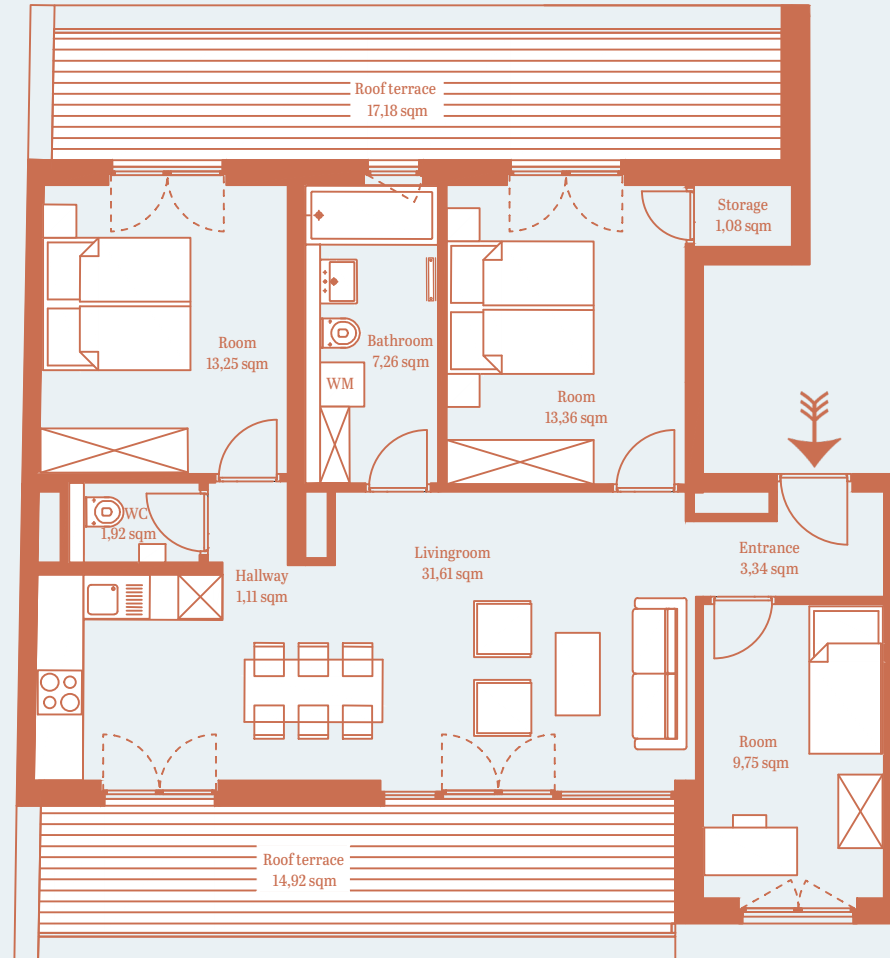
4 ROOMS

2 ROOF TERRACES

90,71 sqm\*



CHARLOTTENBURGER STRASSE



The visual and planning material serves as a preliminary illustration of the project. Deviations at a later planning stage are expressly reserved. Slight deviations in area are possible within a floor plan type. All dimensions are approximate. Due to technical requirements, some areas may have to be coffered and ceilings may have to be suspended. \* Balconies, terraces & loggias are counted at 50%, roof terraces are counted at 25%.