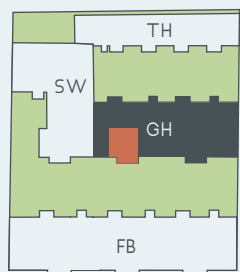


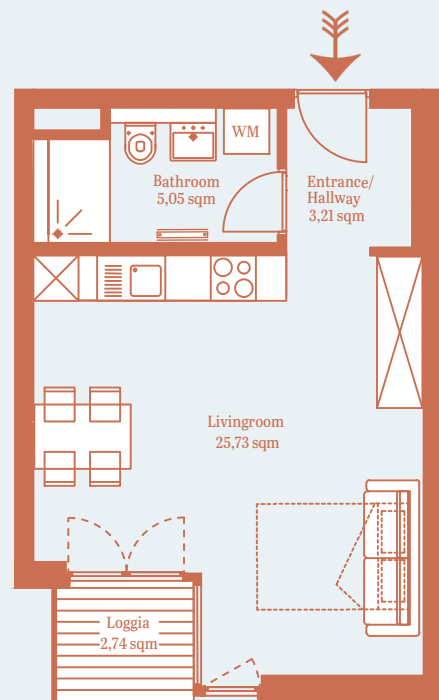
GARDEN HOUSE

# GH E1.2

1<sup>st</sup> FLOOR  
1 ROOM  
LOGGIA  
35,36 sqm\*



CHARLOTTENBURGER STRASSE



The visual and planning material serves as a preliminary illustration of the project. Deviations at a later planning stage are expressly reserved. Slight deviations in area are possible within a floor plan type. All dimensions are approximate. Due to technical requirements, some areas may have to be coffered and ceilings may have to be suspended. \* Balconies, terraces & loggias are counted at 50%, roof terraces are counted at 25%.